

This building was built as a milk factory. At first it was run by the Wilts and Hants Dairy Company and later became the Salisbury, Semley and Gillingham Dairy.

Milk came from Winterslow, Whiteparish, the Grimsteads and the Tytherleys as well as West Dean. Milk was cooled and put in churns and then on a trolley to be taken to the station for dispatch. The trolley was pulled by a trusty donkey who took it to and from the station by itself – no driver needed. In summer cheese was made at the factory.

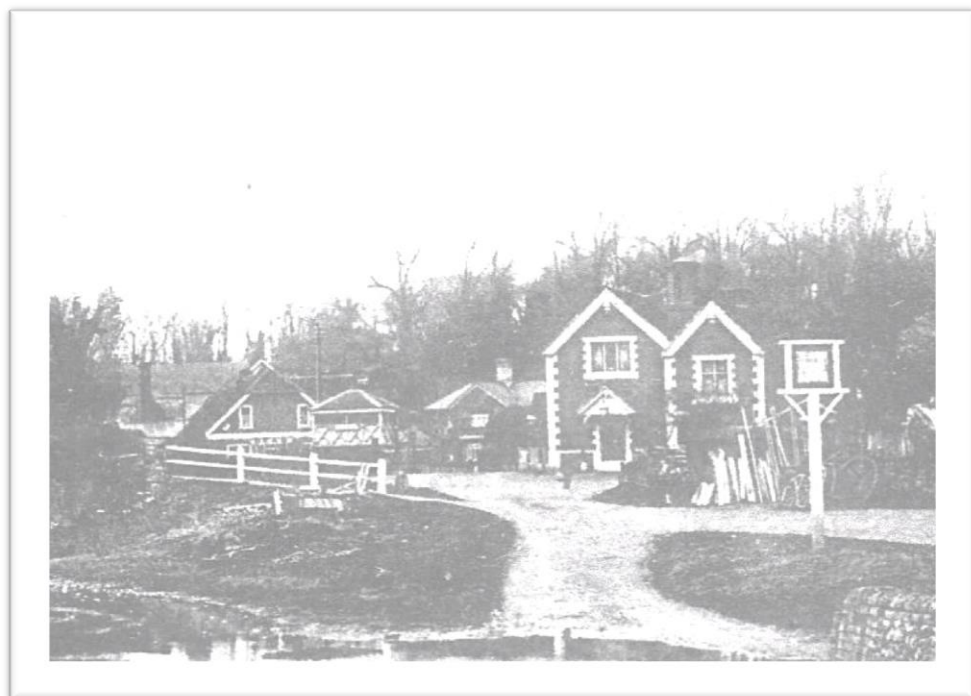


DONKEY AND OTHER STAFF AT THE MILK FACTORY

Once the collection of milk from farms changed to motor transport, the factory closed and the building stood empty for a while. Then it was decided to turn it into a much needed village hall. The conversion work was done by local builder Hursts of Awbridge and from the early 1930s it became King George's Hall. A look at the rear of the building shows clearly some of the structural changes made.

During the Second World War when American forces were stationed in the village – *see board at the Hut* – the hall was taken over by them and used as their dining area or mess hall.

When the Norman Court Estate was sold in 1945 – *for more information about that see the board on the village green* – King George's Hall was not sold but given to the village by the Singer family as a memorial to the late Captain Grant Singer who had been killed at the Battle of El Alamein in 1942.



FRONT OF MILK FACTORY ON LEFT BEHIND SIGNALBOX