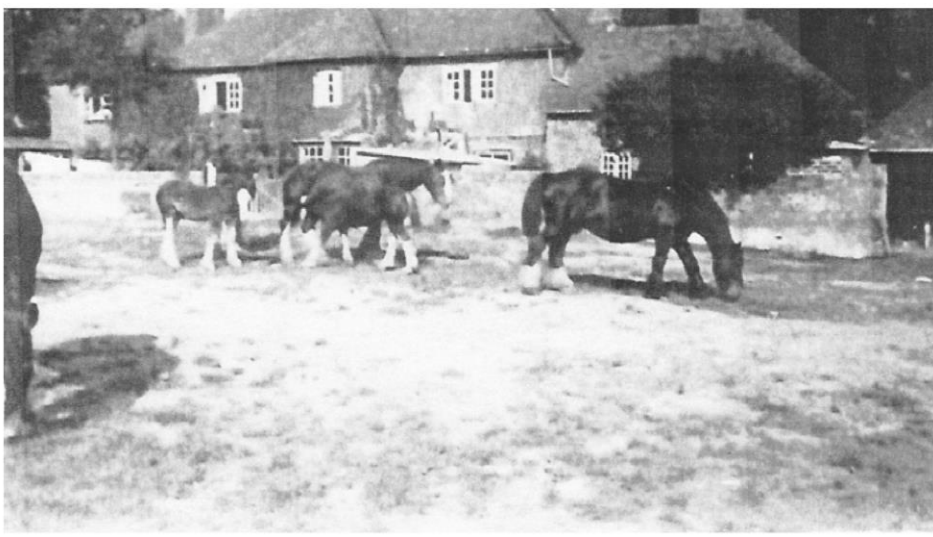




A 1920S WEDDING PARTY IN FRONT OF THE HOUSE

On this site, shown as Deane Farm on a map of 1772, are to be found no less than 6 Grade II listed buildings. The farmhouse is described in its listing as dating from the early 18th century with Flemish brickwork but this only relates to the front façade and the area behind it. The majority of the house dates from Tudor times and includes a priest's hole, these being largely constructed between the 1550s and the 1605 Gunpowder Plot. A large wing to the east was added in 1750 to 1800 and remodelled in the late 19th century. In 1780 the farm was the largest landowner in the Manor.



THE REAR OF THE HOUSE IN THE TIMES WHEN FARMING WAS DONE BY HORSE POWER

The large and small granaries are 18th century, timber framed, weather boarded and on staddle stones. The cart shed is also 18th century, timber framed and weather boarded on brick sills with brick rear wall.

The barn to the south of the house dates from around 1700 and is timber framed with brick walls while the stables to the south west are 18th century and of English bond brickwork.